



Gender and Sustainable Development Goals in the Philippine Development Plan, 2017-2022



DIRECTOR BRENDA JOYCE R. EMDNOZA

National Economic and Development Authority

Compassionate and Harmonized Actions and Networks for Gender Equality: A Women's Summit

30 March 2017



0 - 10 Socioeconomic Agenda

SUSTAINABLE
DEVELOPMENT
GOALS

AMBISYON  NATIN
2040



Philippine Development Plan 2017-2022

0 - 10 Socioeconomic Agenda



0. Peace and order

1. Continue and maintain current **macroeconomic policies**, including fiscal, monetary, and trade policies.



3. Increase **competitiveness** and the ease of doing business. This effort will draw upon successful models used to attract business to local cities (e.g., Davao) and pursue the relaxation of the Constitutional restrictions on foreign ownership, except as regards land ownership, in order to attract foreign direct investment;



2. Institute **progressive tax reform** and more effective tax collection indexing taxes to inflation.



4. Accelerate annual **infrastructure spending** to account for 5% of GDP, with Public-Private Partnerships playing a key role.

0 - 10 Socioeconomic Agenda



5. Promote **rural and value chain development** toward increasing agricultural and rural enterprise productivity and rural tourism.



6. Ensure **security of land tenure** to encourage investments, and address bottlenecks in land management and titling agencies.



7. Invest in **human capital development**, including health and education systems, and match skills and training to meet the demand of businesses and the private sector.



8. Promote **science, technology, and the creative arts** to enhance innovation and creative capacity towards self-sustaining, inclusive development.

0 - 10 Socioeconomic Agenda



- 9.** Improve **social protection** programs, including the government's Conditional Cash Transfer program, to protect the poor against instability and economic shocks.



- 10.** Strengthen implementation of the **Responsible Parenthood and Reproductive Health Law** to enable especially poor couples to make informed choices on financial and family planning.

PDP, 2017-2022 Development Framework



NATIONAL ECONOMIC AND
DEVELOPMENT AUTHORITY

2040



MATATAG, MAGINHAWA AT PANATAG NA BUHAY

2022



**TO LAY DOWN THE FOUNDATION FOR INCLUSIVE GROWTH, A HIGH-TRUST AND RESILIENT SOCIETY,
AND A GLOBALLY-COMPETITIVE KNOWLEDGE ECONOMY**

**“MALASAKIT”
ENHANCING THE SOCIAL FABRIC**

**“PAGBABAGO”
REDUCING INEQUALITY**

**“PATULOY NA PAG-UNLAD”
INCREASING GROWTH POTENTIAL**



Ensure people-centered, clean, and
efficient governance

0, 1, 2



Expand economic
opportunities

1, 2, 3, 4, 5, 8



Increase access to
economic opportunities

4, 6, 7



Advance technology
adoption

8



Stimulate
innovation

8



Pursue swift and fair administration
of justice



**IMPLEMENT STRATEGIC TRADE AND FISCAL POLICY, MAINTAIN MACROECONOMIC STABILITY,
AND PROMOTE COMPETITION**



Promote Philippine culture and
awareness

8



Accelerate human
capital development

7, 9, 10



Reduce vulnerability
of individuals

9, 10



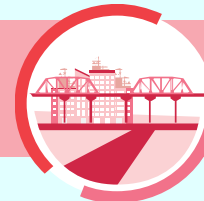
Reach for demographic
dividend

5



Ensure peace and security

0



Accelerate strategic
infrastructure development

3



Ensure safety and build
resilience



Ensure ecological integrity,
clean and healthy
environment

A colorful illustration of a city and a hillside community. On the left, a city skyline with blue and grey buildings is shown. In the center, a hillside with green grass, trees, and a winding road leads up to a cluster of yellow and white houses. A blue bus and a red car are on the road. On the right, a small beach area with a yellow bus and a red car is shown. The background is a light blue sky.

GENDER CONSIDERATION IN THE PDP

Chapter 7: Promoting Philippine Culture and Values



Strategies

Strengthen the protection of the rights of the vulnerable sectors (indigenous peoples, women, youth and children, and persons with disabilities) to access cultural resources and live a life free from discrimination and fear

Chapter 8: Expanding Economic Opportunities in Agriculture, Forestry and Fisheries



NATIONAL ECONOMIC AND
DEVELOPMENT AUTHORITY

Strategic Framework

Expand economic opportunities for those who are currently engaged in producing agriculture, fisheries and forestry products and increase access to economic opportunities for small farmers and fisherfolks including women, the elderly and indigenous peoples

Chapter 9: Expanding Economic Opportunities in Agriculture, Forestry and Fisheries



Strategic Framework

Remove restrictions, provide incentives and promote job-creating investments by supporting the development of services subsectors outside value and supply chains such as social services including welfare services delivered to old persons and the handicapped; child daycare services including day-care services for the handicapped; guidance and marriage counselling services, among others

Chapter 10: Accelerating Human Capital Development



Strategies

- ❑ Implement programs that encourage women to participate in the labor market such as (1) full implementation of the RPRH Law; (2) Improving access and affordability of child care services; (3) providing re-training services for women returning to the workforce; and (4) improving access of women to entrepreneurship opportunities
- ❑ Formulate policies that promote work-life balance

Chapter 10: Accelerating Human Capital Development



Strategies

- ☐ Enhance community-based training for special groups including informal workers, IPs, farmers, fisherfolks, drug dependents, rebel returnees, women victims of abuse and human trafficking, returning and repatriated overseas Filipino and person with disability
- ☐ Generate data on unpaid domestic and care work

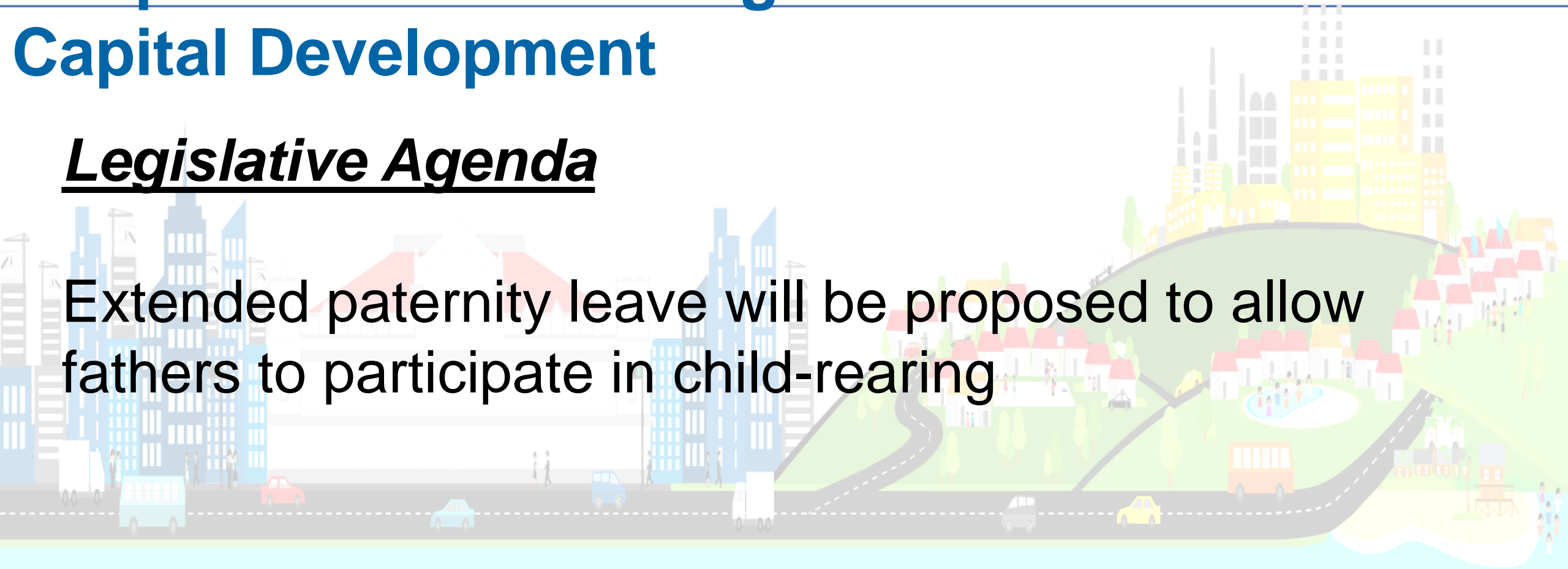
Chapter 10: Accelerating Human Capital Development



NATIONAL ECONOMIC AND
DEVELOPMENT AUTHORITY

Legislative Agenda

Extended paternity leave will be proposed to allow fathers to participate in child-rearing



Chapter 11: Reducing Vulnerability of Individuals and Families



NATIONAL ECONOMIC AND
DEVELOPMENT AUTHORITY

Assessment and Challenges

Women face multiple and intersecting forms of discrimination such as women in poverty, women with disabilities, indigenous and Muslim women, women living in geographically inaccessible areas, and lesbian, bisexual, and transgender women. In fact, women have a higher poverty incidence than the general population in 2012 which was estimated at 25.6 percent. Societal norms impose additional risks as there is unequal power relationship between women and men.

Chapter 11: Reducing Vulnerability of Individuals and Families



NATIONAL ECONOMIC AND
DEVELOPMENT AUTHORITY

Legislative Agenda

- ❑ Mandatory establishment of women and children-friendly spaces in all evacuation centers in the country to safeguard women, children and indigenous practices of locals
- ❑ Extension of maternity leave benefits to improve and harmonize the existing maternity benefits including increasing the leave period from 60 to 78 days to at least 100 days for women in both public and private sector

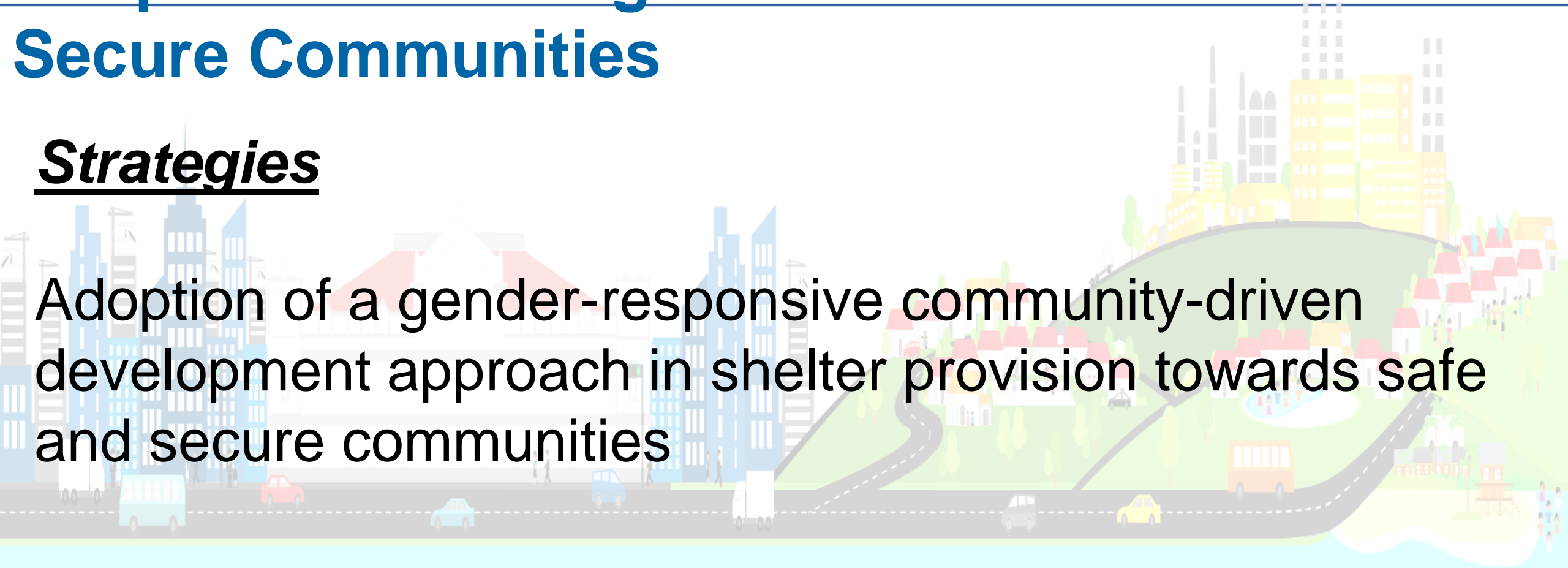
Chapter 12: Building Safe and Secure Communities



NATIONAL ECONOMIC AND
DEVELOPMENT AUTHORITY

Strategies

Adoption of a gender-responsive community-driven development approach in shelter provision towards safe and secure communities



Chapter 13: Reaching for the Demographic Dividend



Strategies

- ❑ Aggressively pursue a sustained universal health care program to lower the mortality rate especially among infants, young children and women
- ❑ Promote proper birth spacing of three to five years to lower fertility levels among women
- ❑ Improve the education of girls, especially at the secondary level to help delay marriage and prevent teenage pregnancy

Chapter 13: Reaching for the Demographic Dividend



Strategies

Address unmet demand for family planning and unwanted pregnancies through the (1) full and aggressive implementation of RA 10354 and RA 9710, Presidential Decree 79, series of 1972 and other relevant national interventions that promote the reproductive rights of all Filipinos; (2) intensify advocacy for increased local governments' counterpart resources and funding; (3) encourage men's involvement and civil society and private sector engagement in the promotion of universal access to modern family planning methods; and (4) strengthen service delivery networks for maternal and adolescent health and family planning

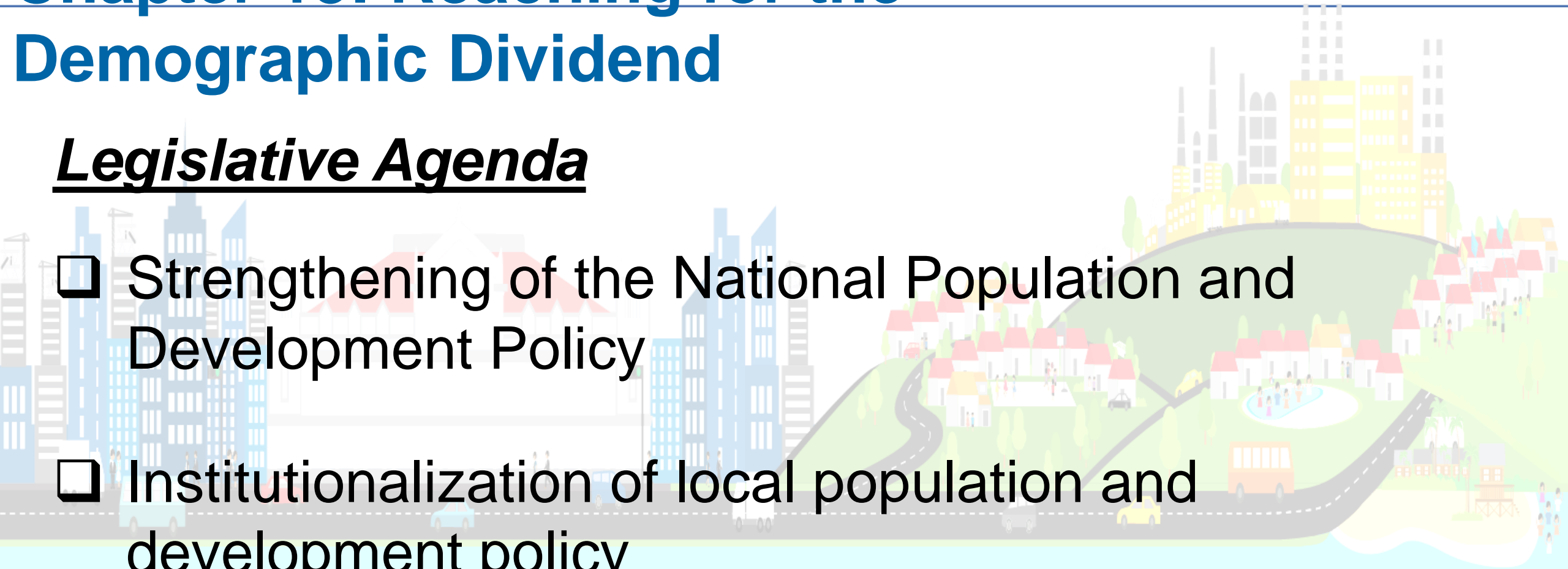
Chapter 13: Reaching for the Demographic Dividend



NATIONAL ECONOMIC AND
DEVELOPMENT AUTHORITY

Legislative Agenda

- ☐ Strengthening of the National Population and Development Policy
- ☐ Institutionalization of local population and development policy
- ☐ National Policy on the Prevention of Teenage Pregnancy



Chapter 17: Attaining Just and Lasting Peace



Assessment and Challenges

Implementation of the United Nations Security Council Resolution 1325 and National Action Plan on Women, Peace and Security needs to be continued to ensure that women are further enabled and empowered to expand their role in conflict situations.

Chapter 17: Attaining Just and Lasting Peace



Strategies

Implement peace-promoting and catch-up socioeconomic development in conflict areas that promote peace and is sensitive to conflict, culture and gender

Chapter 18: Ensuring Security, Public Order and Safety



NATIONAL ECONOMIC AND
DEVELOPMENT AUTHORITY

Strategies

Enhance the capacity of the security sector to respond to gender and development issues, especially during natural and human-induced disasters.

Chapter 19: Accelerating Infrastructure Development



NATIONAL ECONOMIC AND
DEVELOPMENT AUTHORITY

Strategies

Access and other support facilities for the marginalized sectors like senior citizens, persons with disabilities, women, among others, will be integrated in the design of transport infrastructure projects.

Chapter 19: Accelerating Infrastructure Development



NATIONAL ECONOMIC AND
DEVELOPMENT AUTHORITY

Strategies

Secure tenure in affordable, safe and disaster-resilient housing will be provided to the underprivileged and homeless families wherein cultural aspects, gender-responsiveness and accessibility will be considered. Housing designs will be gender-responsive, elderly- and persons with disability-friendly.

Chapter 20: Ensuring Ecological Integrity, Clean and Healthy Environment



Assessment and Challenges

Efforts on disaster risk reduction and climate change adaptation remains inadequate. There is a lack of information and education campaigns to increase adaptive capacity of communities, especially vulnerable groups such as women, children, older persons, indigenous peoples and persons with disabilities



ACCOMPANYING DOCUMENTS OF THE PDP

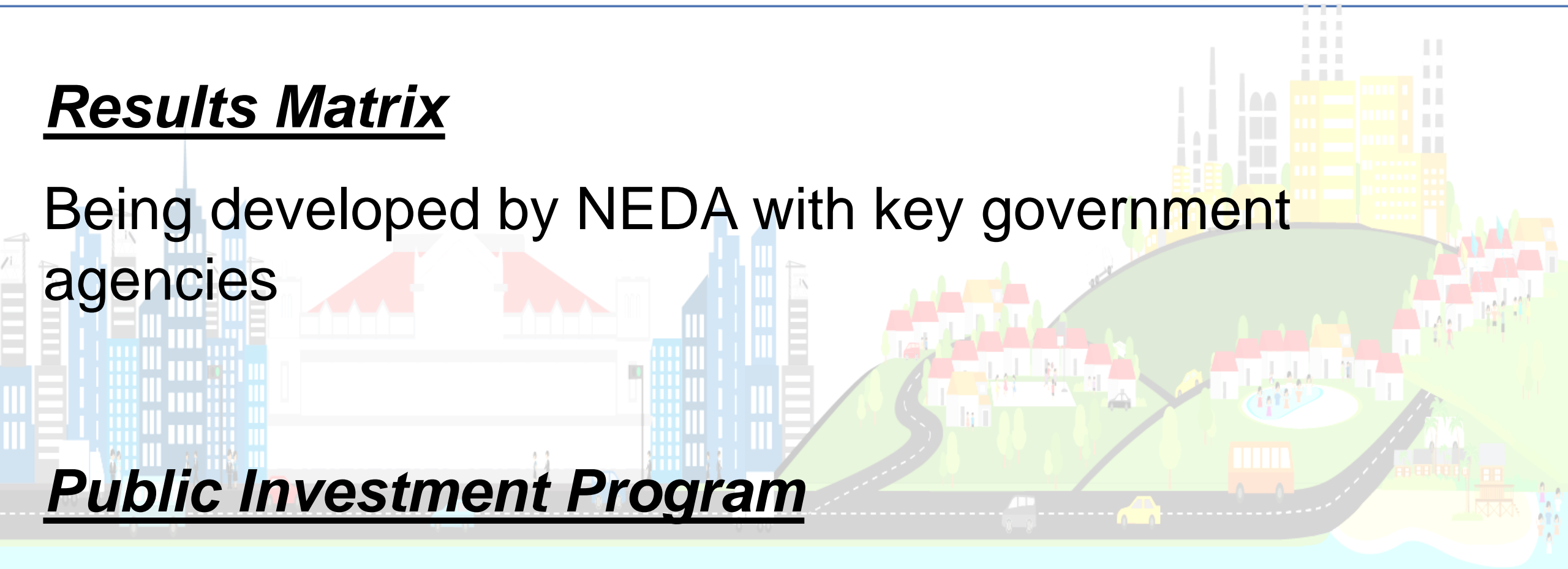
A colorful illustration of a cityscape and a hillside. On the left, there are blue skyscrapers and a red-roofed building. In the center, a road with cars and a bus leads towards a green hillside. On the hillside, there are yellow buildings, a swimming pool, and a bus. The background is a light blue sky and a light blue body of water at the bottom.

Results Matrix

Being developed by NEDA with key government agencies

Public Investment Program

Being finalized by the NEDA Secretariat



THANK YOU!

Link to the PDP: <http://pdp.neda.gov.ph>

